



Homeless Link

Snapshot Estimates

Independent Partners
– Who and why?



Snapshot Estimates

Independent Partners

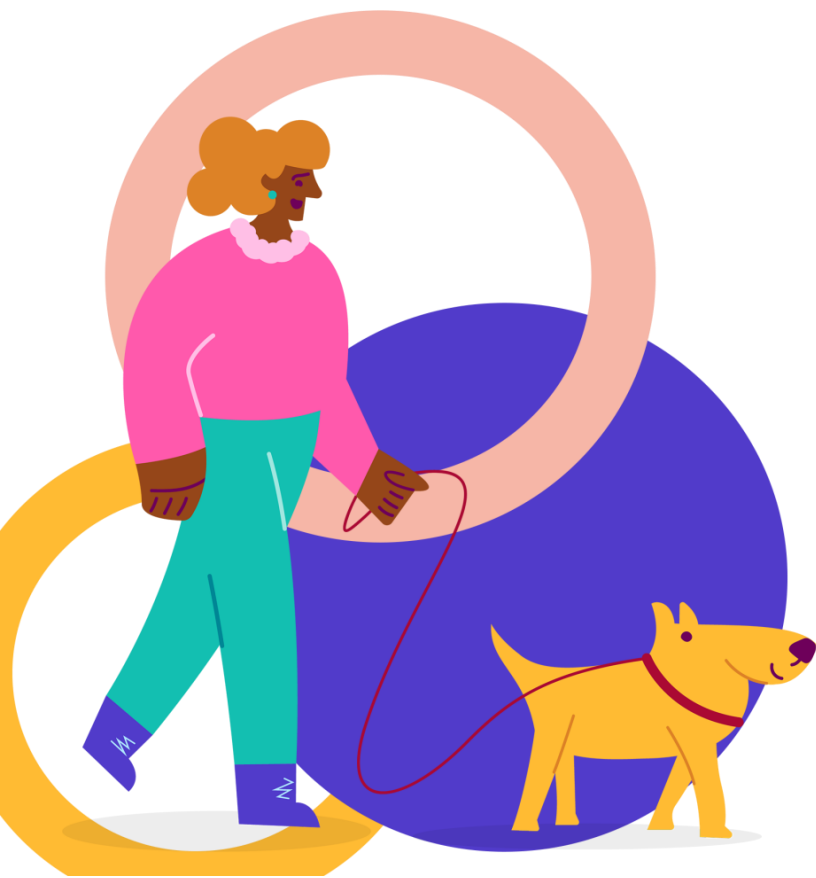
Why are Independent Partners important?

The involvement of non-commissioned, Independent Partners is an essential element of any rough sleeping snapshot estimate and should be part of your planning process.

Independent Partners add transparency to the snapshot estimates process and allow Homeless Link to speak to someone not commissioned or employed by the LA, as part of the Quality Assurance process.

In areas carrying out a count-based estimate, your Independent Partners must attend the count on your chosen typical night.

In areas using either the evidence-based estimate or evidence-based estimate including a spotlight count approach, your Independent Partners must attend the estimate meeting.



Snapshot Estimates

Independent Partners

What do Independent Partners do?

Independent Partners are objective observers but can be involved in executing your annual rough sleeping snapshot estimate.

At a count-based estimate, your Independent Partners can go out with count teams on the night. You just need to ensure they are in one of the first teams back at the count base so they can observe the other count teams returning and the figures being collated.

At all evidence-based estimate meetings, your Independent Partners can contribute intelligence and be part of the discussion of the final figure.

If your evidence-based estimate includes a spotlight count, you can have Independent Partners at your spotlight count, but this is not compulsory. They must attend your evidence-based estimate meeting.



Snapshot Estimates

Independent Partners

For your snapshot estimate to be fully 'Assured' by Homeless Link, you must involve at least one Independent Partner in collecting the rough sleeping figures for your area.

Wherever possible we recommend having more than one Independent Partner, in case of illness etc.

Your Independent Partners must not be commissioned or funded by the local authority. They can be from e.g.

- Community groups
- Faith groups
- Soup kitchens
- Volunteers from the public, e.g. doctor or teacher, Scout or Guide Leader
- Non-commissioned charities e.g. hospices
- Other non-commissioned services
- People with lived-experience of homelessness



Snapshot Estimates

Independent Partners

People from the below organisations and bodies would not be considered an Independent Partner:

- x Homeless Link Quality Assurance Verifier
- x Outreach team
- x Police
- x Statutory organisations e.g. probation service
- x MHCLG
- x County Council

If you need help finding Independent Partners to participate in your snapshot estimate, Housing Justice have offered to help wherever they can. You can contact Mark Brennan

m.brennan@housingjustice.org.uk

and Isabella Harriss

i.harriss@housingjustice.org.uk



Snapshot Estimates

Independent Partners

The Rough Sleeping Snapshot Estimates Toolkit contains a helpful short video for Independent Partners.

It explains their role and what they will be asked to do on the night of a count-based estimate or at an evidence-based estimate meeting.

Please ensure your Independent Partners have a link to these resources.

Please also explain the rough sleeping snapshot estimate approach you will be using in your local authority area and answer any questions.

If they wish to, your Independent Partners can also contact Homeless Link with questions:
verifiers@homelesslink.org.uk



Snapshot Estimates Questions?



If you have questions about Independent Partners you can:

- **Email** the Rough Sleeping Snapshot Estimate Coordinator:
verifiers@homelesslink.org.uk
- **Phone** the Rough Sleeping Snapshot Estimate Coordinator:
07958135579
- Attend one of the weekly **live Q&A sessions**: dates and times and booking links will be sent out in the weekly information updates to LA Leads and Count Coordinators
- Find comprehensive information on in the **Rough Sleeping Snapshot Estimates Toolkit** webpage on the Homeless Link website

Homeless Link

What we do

Homeless Link is the national membership charity for frontline homelessness services. We work to improve services through research, guidance and learning, and campaign for policy change that will ensure everyone has a place to call home and the support they need to keep it.

homeless.org.uk

[@HomelessLink](https://twitter.com/HomelessLink)