



Homeless Link

Snapshot Estimates

**A brief guide for
Independent Partners**



Snapshot Estimates

A brief guide for Independent Partners



Homeless Link

What are the rough sleeping snapshot estimates?

Since autumn 2010, all local authorities have been required to submit an annual snapshot estimate to the Ministry for Housing Communities and Local Government (MHCLG) to indicate the number of people sleeping rough in their area on a 'typical' night between 1st October and 30th November.

Homeless Link coordinate the annual rough sleeping snapshot estimates on behalf of MHCLG.

Local authorities select the 'typical' night they feel most appropriate for their area, and one of three possible approaches.

The snapshot estimate coordinator who has asked you to be involved will explain the approach, the date they have chosen, the definition of rough sleeping we use, etc.



Snapshot Estimates

A brief guide for Independent Partners



Homeless Link

What do Independent Partners do?

Independent Partners are objective observers, and your role is simply to ensure the annual rough sleeping snapshot estimates are properly carried out.

Independent Partners add transparency to the process and allow Homeless Link to speak to someone not commissioned by the LA, where necessary, as part of the Quality Assurance process.

Quality Assurance is carried out by a Homeless Link-appointed QA verifier and is important because the rough sleeping snapshot estimate numbers collected by MHCLG from local authorities across England are published in a report.

Independent Partners are *not* verifiers, you just need to observe the snapshot estimate process and let the QA verifier know if you have any concerns.



Snapshot Estimates

A brief guide for Independent Partners



Homeless Link

What do Independent Partners do?

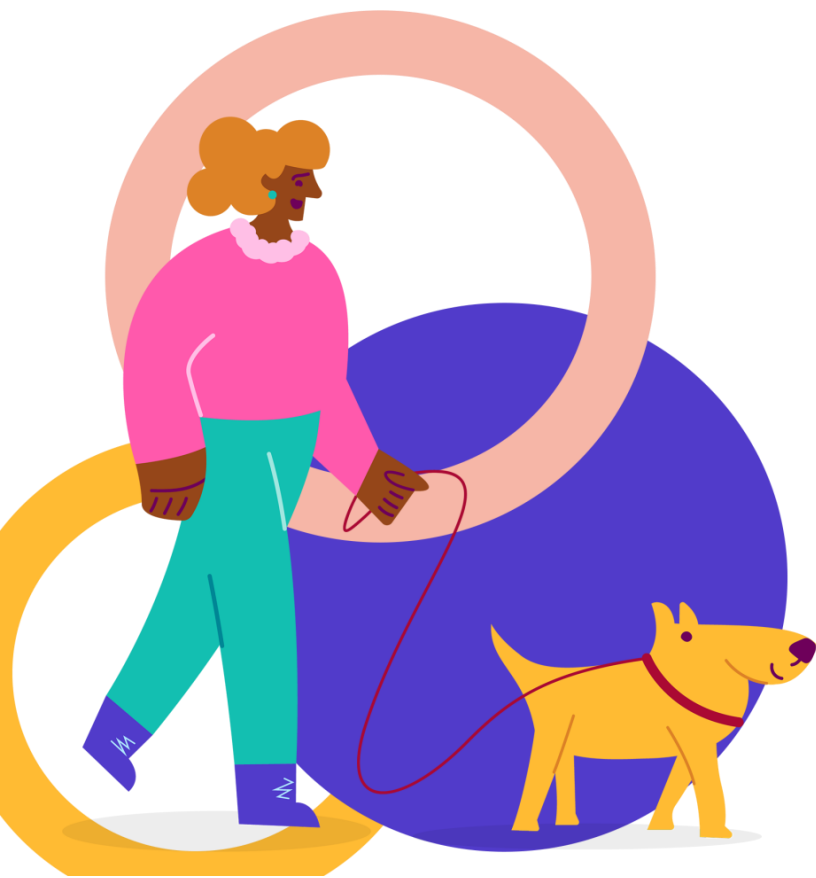
If you are asked to be an Independent Partner for a count-based estimate, you attend the count on the designated 'typical' night.

The count will not begin before midnight, but it may be scheduled to begin in the dawn hours e.g. around 4am.

You can go out with count teams and the count coordinator should ensure you are in one of the first teams back at the count base so you can observe the other count teams returning and the figures being collated.

The Homeless Link Quality Assurance verifier is not at the count. They will speak to you by phone or online a day or so after the count.

They will make sure you're comfortable with how it has been carried out and you don't feel any areas or individuals were missed.



Snapshot Estimates

A brief guide for Independent Partners

What do Independent Partners do?

If you are asked to participate in an evidence-based estimate as an Independent Partner, you attend the evidence-based estimate meeting, which is held after the chosen 'typical' night. You can contribute intelligence if you wish and be part of the discussion of the final figure.

If you are asked to participate in an evidence-based estimate including a spotlight count you may wish to attend the spotlight count held on the 'typical' night, but this is not compulsory. And it would be at the discretion of the spotlight count coordinator. You must attend the evidence-based estimate meeting held after the chosen 'typical' night where you can contribute intelligence if you wish and be part of the discussion of the final figure.



Snapshot Estimates

Independent Partners

Who can be an Independent Partner?

If you don't receive local authority funding for your work, you can be an Independent Partner. For example, you're from:

- A community group
- A faith group
- A soup kitchen
- A non-commissioned charity e.g. hospice
- You are a volunteer from the public

People from the below organisations and bodies would *not* be considered independent:

- x The Homeless Link Quality Assurance Verifier
- x Commissioned outreach workers
- x Police
- x Statutory organisations e.g. probation service
- x MHCLG
- x County Council employees or funded services



Snapshot Estimates

A brief guide for Independent Partners

I'd like to know more



Homeless Link

There are short videos and documents explaining all the processes and requirements in the Rough Sleeping Snapshot Estimates Toolkit in the Knowledge Hub on the Homeless Link website.

These are not required watching and reading for Independent Partners. But check out any of the resources if you would like to know more about the annual rough sleeping snapshot estimates.

If you have any questions at all about the process, you can ask your snapshot estimate coordinator or contact Homeless Link:

verifiers@homelesslink.org.uk



Homeless Link

What we do

Homeless Link is the national membership charity for frontline homelessness services. We work to improve services through research, guidance and learning, and campaign for policy change that will ensure everyone has a place to call home and the support they need to keep it.

homeless.org.uk

[@HomelessLink](https://twitter.com/HomelessLink)