

# Snapshot Estimates



**Quality Assurance  
and why it's  
important**

# Snapshot Estimates

## Quality Assurance and why it's important

Each year, the rough sleeping snapshot estimates data are analysed by MHCLG and a report published alongside the figures for all LA areas in England.

The role of a rough sleeping snapshot estimate QA verifier is to ensure that all the proper processes have been followed and the final rough sleeping returns submitted via DELTA by local authorities are accurate and publishable.

QA Verifiers are either staff, associates, or volunteers who are recruited and trained by Homeless Link and follow a code of conduct (see Toolkit).



# Snapshot Estimates

## QA and why it's important

From 2025 onwards, Quality Assurance for all rough sleeping snapshot estimates, including count-based estimates, will be carried out remotely.

Each year, a QA verifier will attend a small percentage of count-based estimates and online estimate meetings, but most QA will take place by phone.

For the quality of your evidence-based estimate to be 'fully assured' you must hold an estimate meeting. Emails are not sufficient.

The meeting doesn't have to involve all your partner agencies, but as many as possible who can attend, plus your Independent Partner.

Let Homeless Link know asap what your snapshot estimates plan is so that we can arrange the right QA process.



# Snapshot Estimates

## QA and why it's important

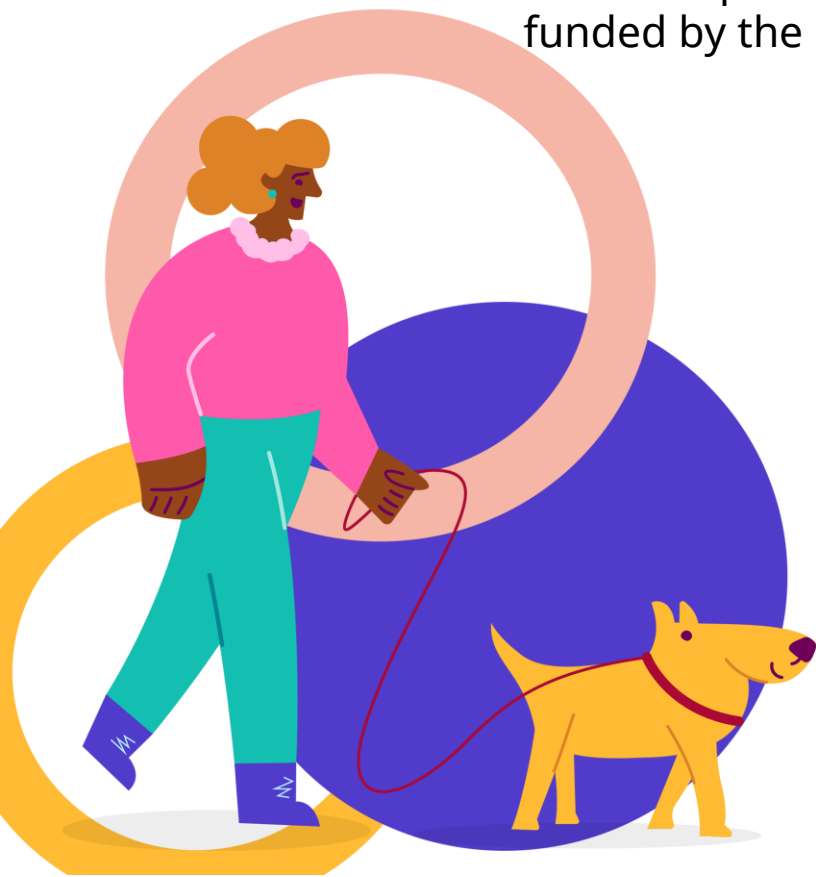
For the quality of your snapshot estimate to be 'fully assured' by Homeless Link, you must involve at least one Independent Partner in collecting the rough sleeping figures for your area.

Your Independent Partner is someone who is not commissioned or funded by the local authority or county council, e.g.

- Community groups
- Faith groups
- Soup kitchens
- Volunteers from the public, e.g. doctor, teacher
- Non-commissioned charities e.g. hospices
- Other non-commissioned services

If you are holding a count-based estimate, your Independent Partner must be present on the night of the count.

For an evidence-based estimate or evidence-based estimate including a spotlight count, your Independent Partner must attend your evidence-based estimate meeting.



# Snapshot Estimates

## QA and why it's important



There is an example Quality Assurance form in the Rough Sleeping Snapshot Estimates Toolkit.

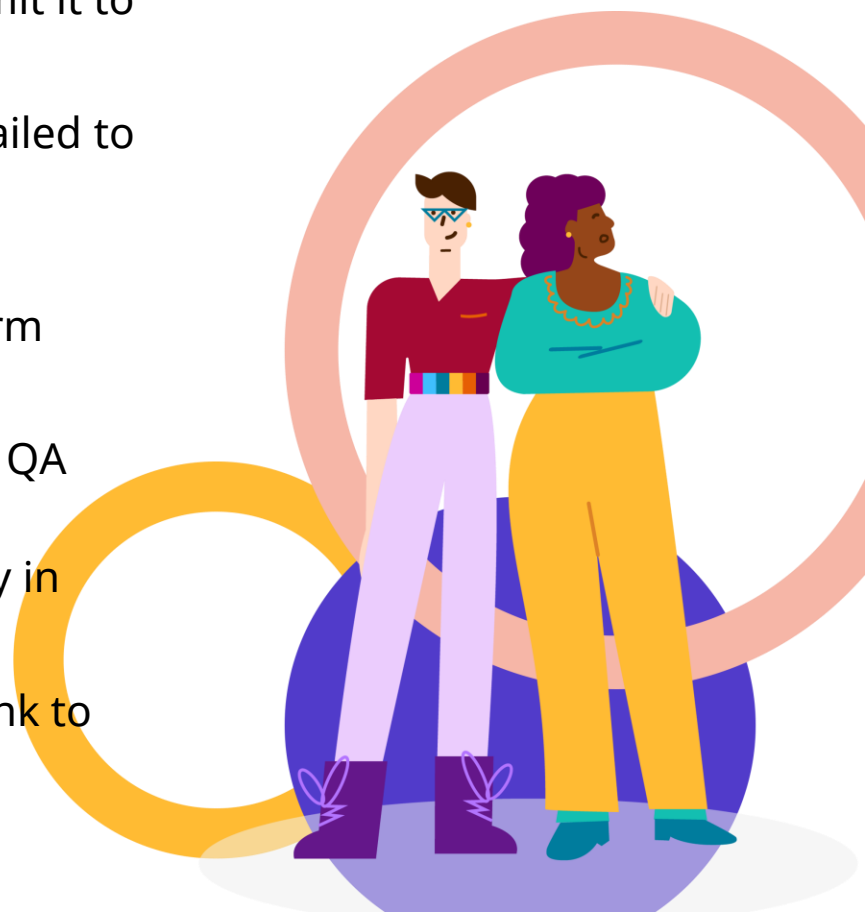
The QA verifier will complete this form and submit it to Homeless Link for sign off.

Once the form has been signed off it will be emailed to you.

Don't submit your returns to DELTA until you have received a signed off Quality Assurance form from Homeless Link.

DELTA submissions must match the data on the QA form and all quality assured figures must be submitted to DELTA by the end of the first Friday in December.

The final stage of the process is for Homeless Link to certify the DELTA returns as correct.



# Snapshot Estimates Questions?



If you have questions about the Quality Assurance process you can:

- **Email** the Rough Sleeping Snapshot Estimate Coordinator:  
[verifiers@homelesslink.org.uk](mailto:verifiers@homelesslink.org.uk)
- **Phone** the Rough Sleeping Snapshot Estimate Coordinator:  
07958135579
- Attend one of the weekly **live Q&A sessions**: dates and times and booking links will be sent out in the weekly information updates to LA Leads and Count Coordinators
- Find comprehensive information on in the **Rough Sleeping Snapshot Estimates Toolkit** webpage on the Homeless Link website

# Homeless Link

## What we do

Homeless Link is the national membership charity for frontline homelessness services. We work to improve services through research, guidance and learning, and campaign for policy change that will ensure everyone has a place to call home and the support they need to keep it.

**[homeless.org.uk](https://homeless.org.uk)**

**[@HomelessLink](https://twitter.com/HomelessLink)**