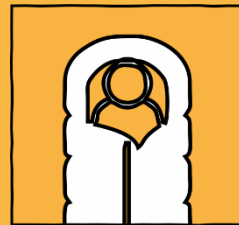


Putting inclusion health on the agenda



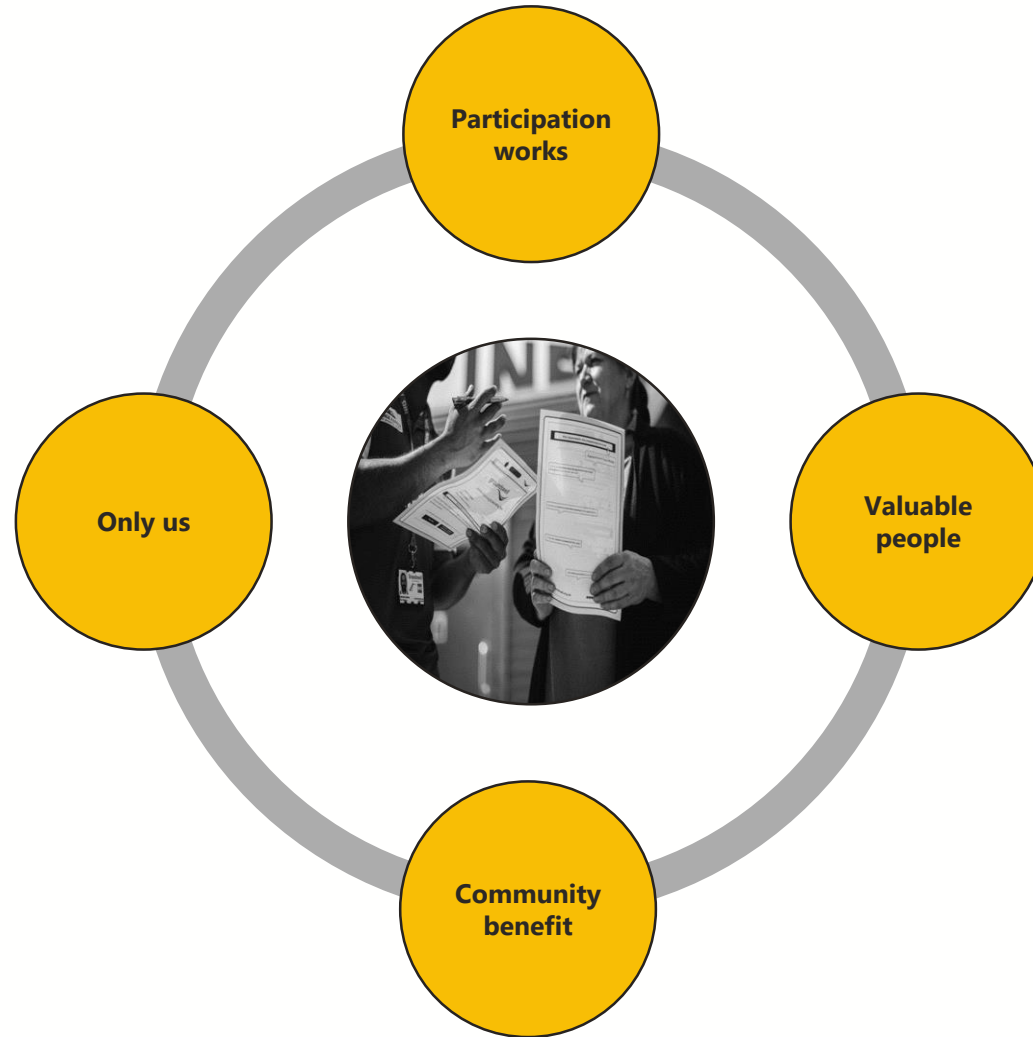
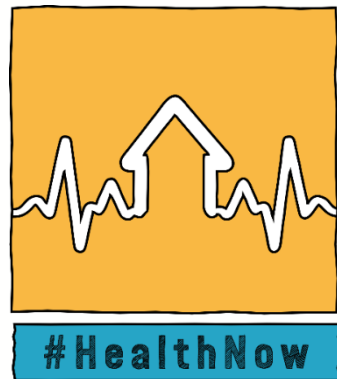
Groundswell
Out of homelessness

Homeless Link Conference
30 September 2020

Jenny.mcateer@groundswell.org.uk

Twitter: Jen_Jen_Mac

And Groundswell?



SAVING LIVES, SAVING MONEY
How Homeless Health Peer Advocacy Reduces Health Inequalities



THE YOUNG FOUNDATION
groundswell
OAK FOUNDATION



Groundswell
Out of homelessness

Overview

Why put inclusion health on the agenda?

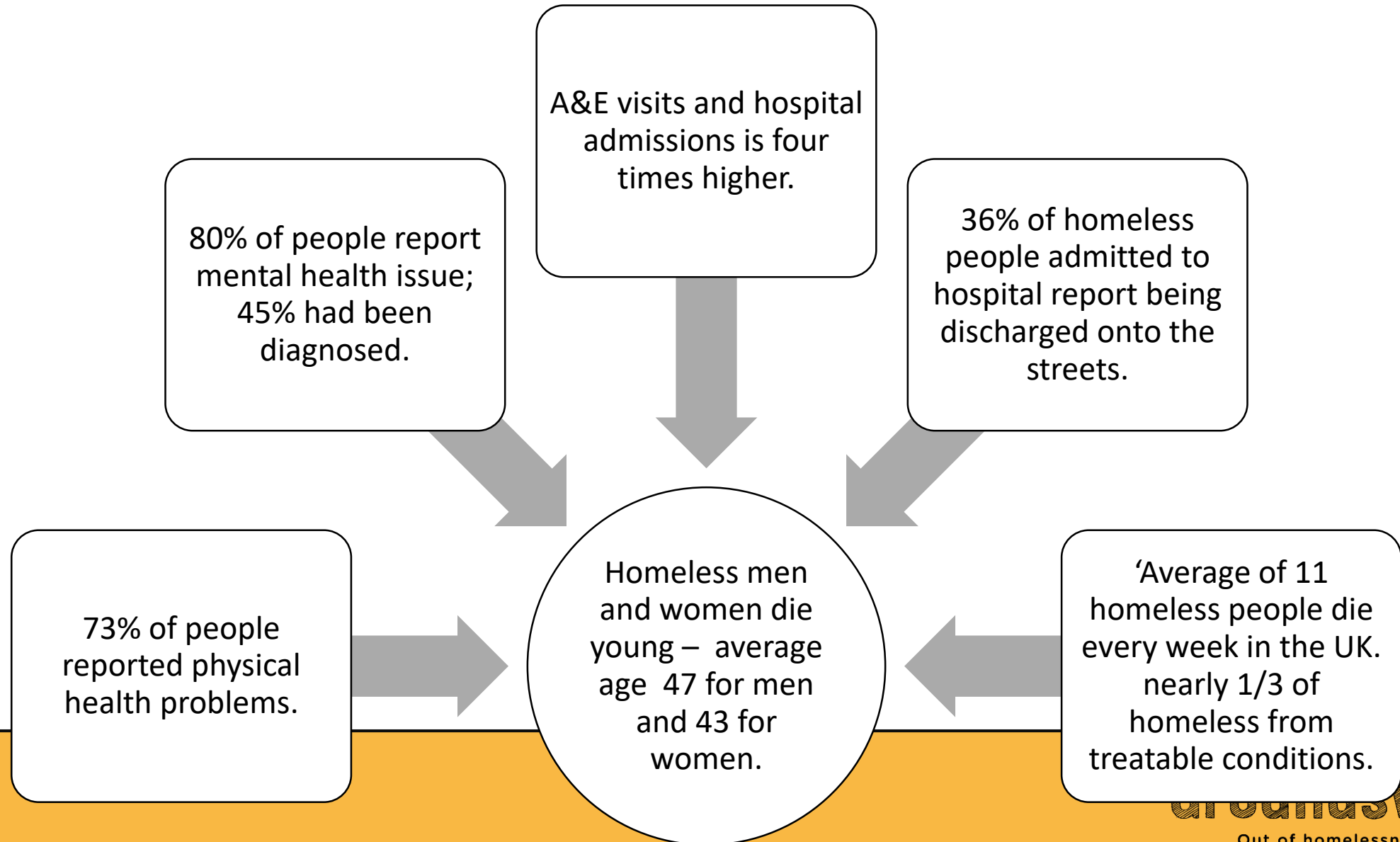
- Barriers to accessing health care for people experiencing homelessness
- COVID-19

Recipe for inclusion health: #HealthNow

- Who's agenda should inclusion health be on (local and national)
- Start with power of the peer
- Alliance building
- Deciding together
- Specialist pathways for inclusion health



Why? Impact of inequality



Why? Break down barriers

Practical

- Prioritisation of immediate needs over healthcare
- Lack of address makes it difficult to get communication about health.
- Digital divide: privacy

Personal barriers

- Fear and previous experience of stigma
- Literacy and communication
- Knowledge of rights
- Skills to challenge effectively
- Choice and control
- Digital divide: skills

Financial barriers

- Ability to travel to and from appointments
- Lack of access to telephone, credit, data and charging
- Digital divide: equipment

System barriers

- Registration in primary care and dentistry
- Appointment systems and opening times
- Coordination of care fragmented
- Specialist pathways are postcode lottery
- Discharge to the streets
- Condition specific- e.g. Dual Diagnosis.
- Digital Divide: online only methods

Why? COVID and Inclusion

Opportunities

Linking clinical support with accommodation

Positive health impact of everyone in

A comprehensive Cross-sector approach

Digital and flexible service approaches

Challenges

Existing health needs

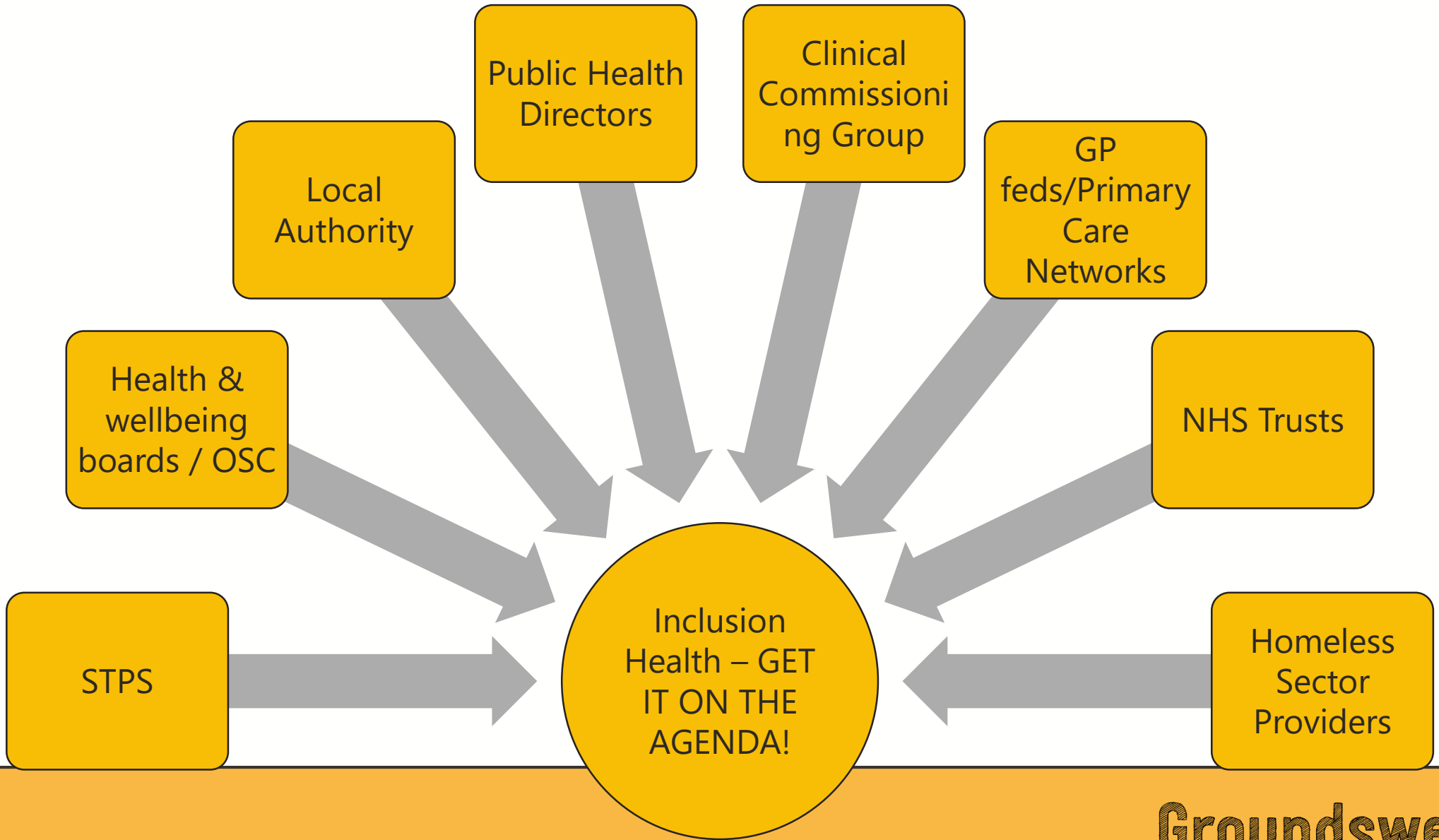
Vulnerability to infection and hospitalisation

Lack of multi-agency coordinated response

Digital and flexible service approaches



Whose agenda should inclusion health be on?



What is the recipe for inclusion health?



#HealthNow in practice

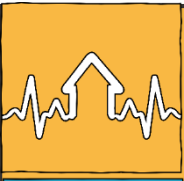
Recruit and train peer researchers

Develop #HealthNow Alliance

Carry out local research on barriers to accessing services

Set up peer led service to support people to access services

Peers set agenda and hold local actors to account



Thank You

For more info: Jenny.mcateer@groundswell.org.uk



 020 7725 2851

 www.groundswell.org.uk

 @ItsGroundswell